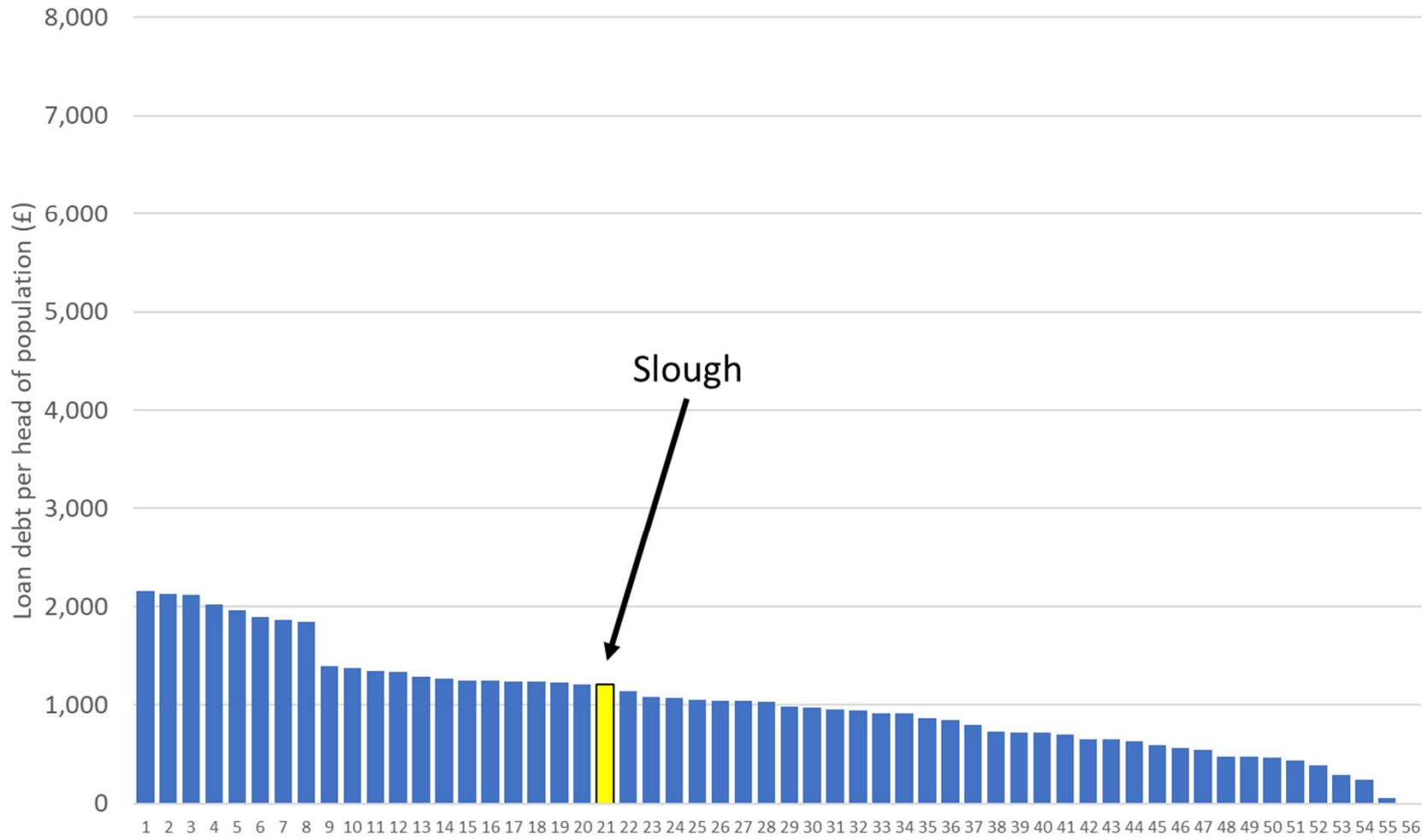
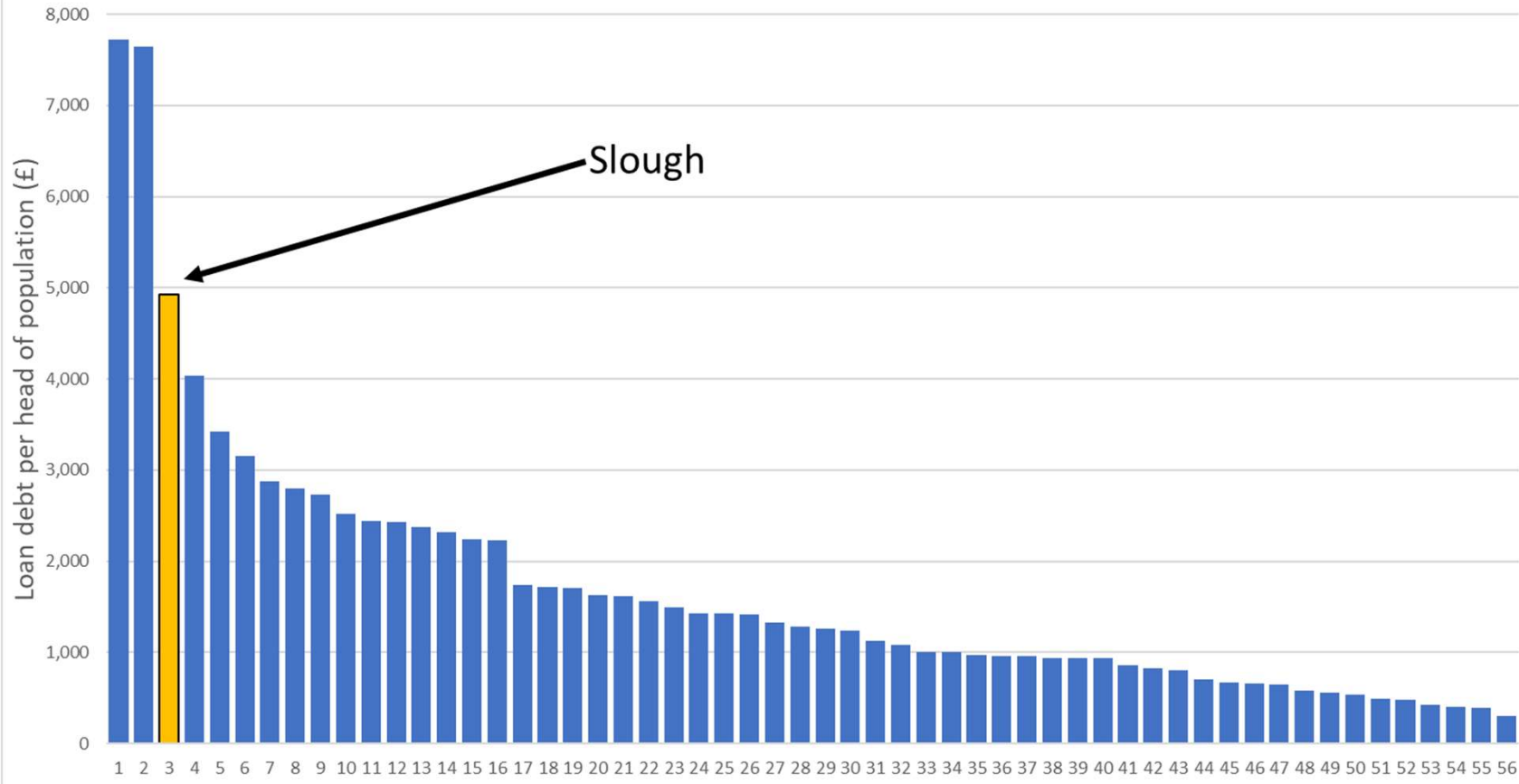


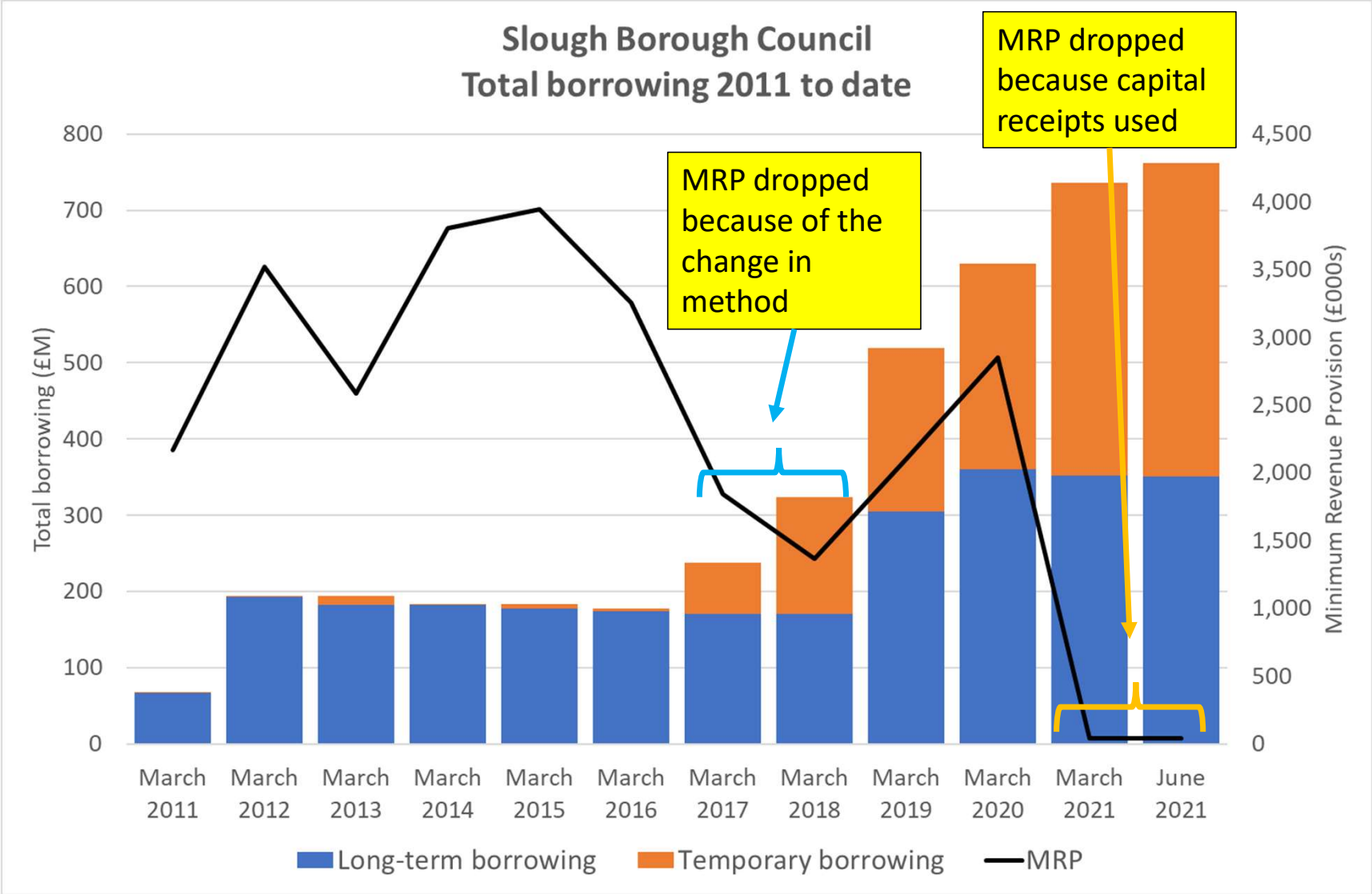
Borrowing per head of population Unitary authorities 2015/16



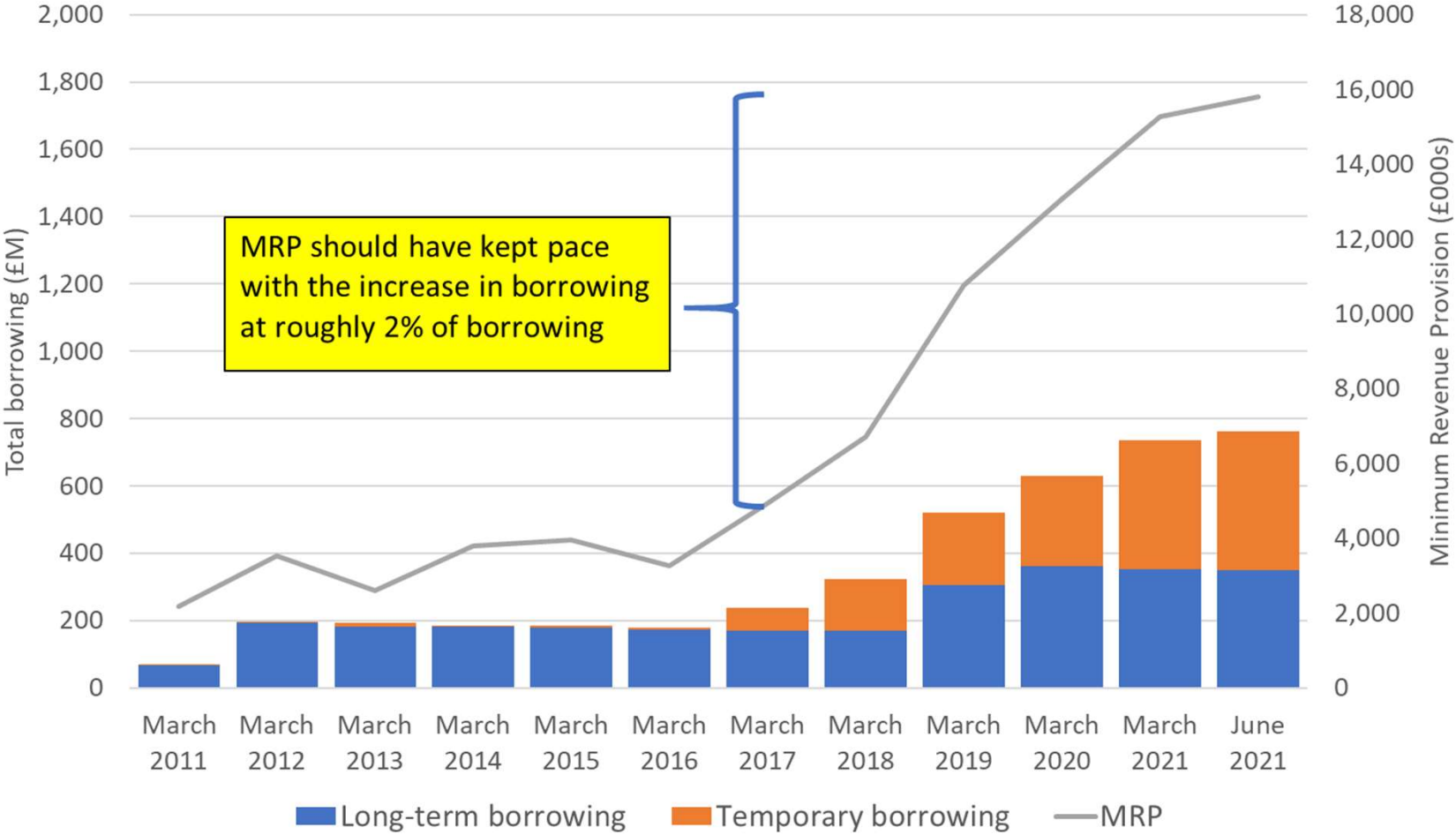
Borrowing per head of population Unitary authorities 2020/21



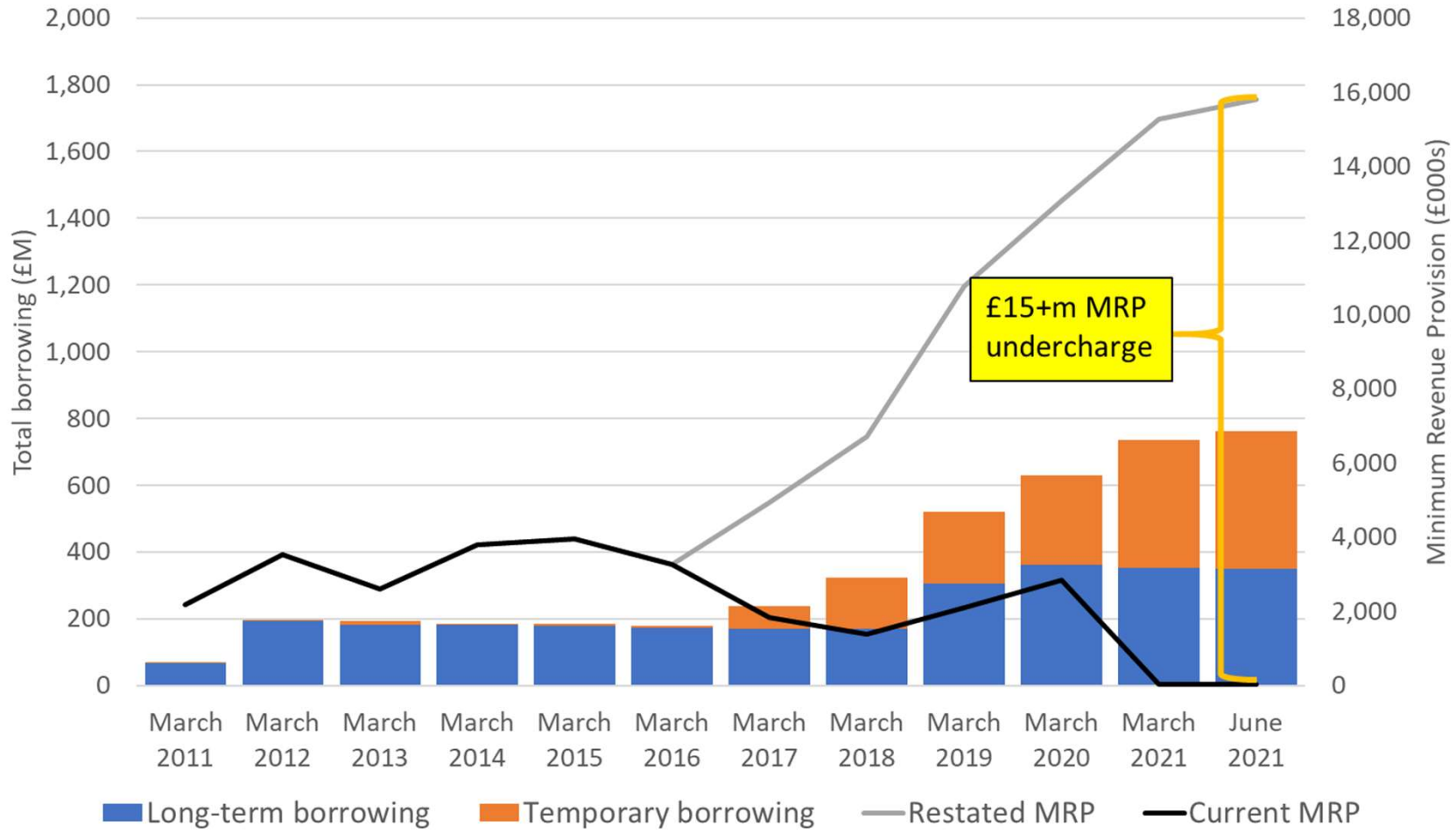
Slough Borough Council Total borrowing 2011 to date



Slough Borough Council Total borrowing 2011 to date



Slough Borough Council Total borrowing 2011 to date



CURRENT ESTIMATED FINANCIAL DEFICIT – JULY 2021

The estimated Accumulated Deficit as at 31 March 2022 is £111.7m

This is estimated to increase by £62.4m to £174.1m by 31 March 2025

ISSUE	Adjustments to Final Outturn Position					Additional Annual Budget Adjustments			
	Pre-19/20 £m	2019/20 £m	2020/21 £m	2021/22 £m	Total Deficit £m	2022/23 £m	2023/24 £m	2024/25 £m	Total Deficit £m
Roll forward of budget pressures						6.9	33.2	19.0	59.1
Opening MTFS Gap - March 2021						18.0	9.3		27.3
Forecast Outturn Position									0.0
Minimum Revenue Provision (MRP)	16.9	7.9	12.7	14.4	51.9	13.2			13.2
Nova House		0.2	5.0	2.0	7.2	1.7	(1.4)	(0.3)	0.0
Original Capitalisation Direction				15.2	15.2				0.0
Incorrect capitalisation of staff costs		3.5	3.4	2.5	9.4	1.9			1.9
Increase Reserve Levels				10.0	10.0				0.0
Emerging Pressures, Contingencies, and Provisions		3.5		4.4	7.9	9.5		1.7	11.2
Savings Required						(18.0)	(22.1)	(10.2)	(50.3)
Total Deficit	16.9	15.1	24.3	55.4	111.7	33.2	19.0	10.2	62.4